



# AMERICAN

BAR & GRILL

## Set Menus

### Kennedy

10,500

*I*

**Market Carpaccio**

*II*

**Wedge Salad**  
*or*  
**Low Country Crab Soup**

*III*

**Prime Rib**  
6oz (170g) • 8oz (225g)  
*or*  
**Double R Ranch USDA**  
**Prime New York Strip Loin**  
12oz (340g)  
*or*  
**Grain-Fed Rib Eye**  
16oz (450g) 220-Day  
*or*  
**Australian Double-Cut**  
**Lamb Chops**  
*or*  
**Fresh Catch of the Day**

*Dessert*

**Petite Baked Cheesecake**  
*or*  
**Yuzu Sherbet**

**Segafredo Zanetti Coffee**  
*or*  
**Art of Tea Selection**

### Washington

9,000

*I*

**Field Green Salad with**  
**Seasonal Vegetables**

*II*

**Jumbo Shrimp with Yuzu**  
**Cocktail Sauce**

*III*

**Low Country Crab Soup**

*IV*

**Prime Rib**  
6oz (170g) • 8oz (225g)  
*or*  
**220-Day Grain-Fed Steak**  
• 12oz (340g) Rib Eye  
• 5oz (140g) Tenderloin  
*or*  
**Australian Double-Cut**  
**Lamb Chops**  
*or*  
**Fresh Catch of the Day**

*Dessert*

**Petite Baked Cheesecake**  
*or*  
**Yuzu Sherbet**

**Segafredo Zanetti Coffee**  
*or*  
**Art of Tea Selection**

### Lincoln

7,500

*I*

**Caesar Salad**

*II*

**Maryland Crab Cake**

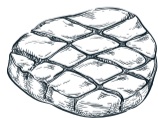
*III*

**6oz (170g) Prime Rib**  
+2oz (56g) 900  
*or*  
**220-Day Grain-Fed Beef**  
**Tenderloin**  
*or*  
**Grilled Iwate Chicken**  
**Breast**  
*or*  
**Fresh Catch of the Day**

*Dessert*

**Petite Baked Cheesecake**  
*or*  
**Yuzu Sherbet**

**Segafredo Zanetti Coffee**  
*or*  
**Art of Tea Selection**



## Premium Upgrades

- ▶ **12oz (340g) Snake River Farms American Wagyu Rib Eye**
- ▶ **8oz (225g) Snake River Farms American Wagyu New York Strip Filet**
- ▶ **5oz (140g) Niigata Snow-Aged A4 Wagyu**

Ask your server about additional main course premium upgrade options.